

FOR LEASE

1306

Wellington St. West

SUITE 300 | 2,806 SQ FT



Huntington
PROPERTIES

Key Facts

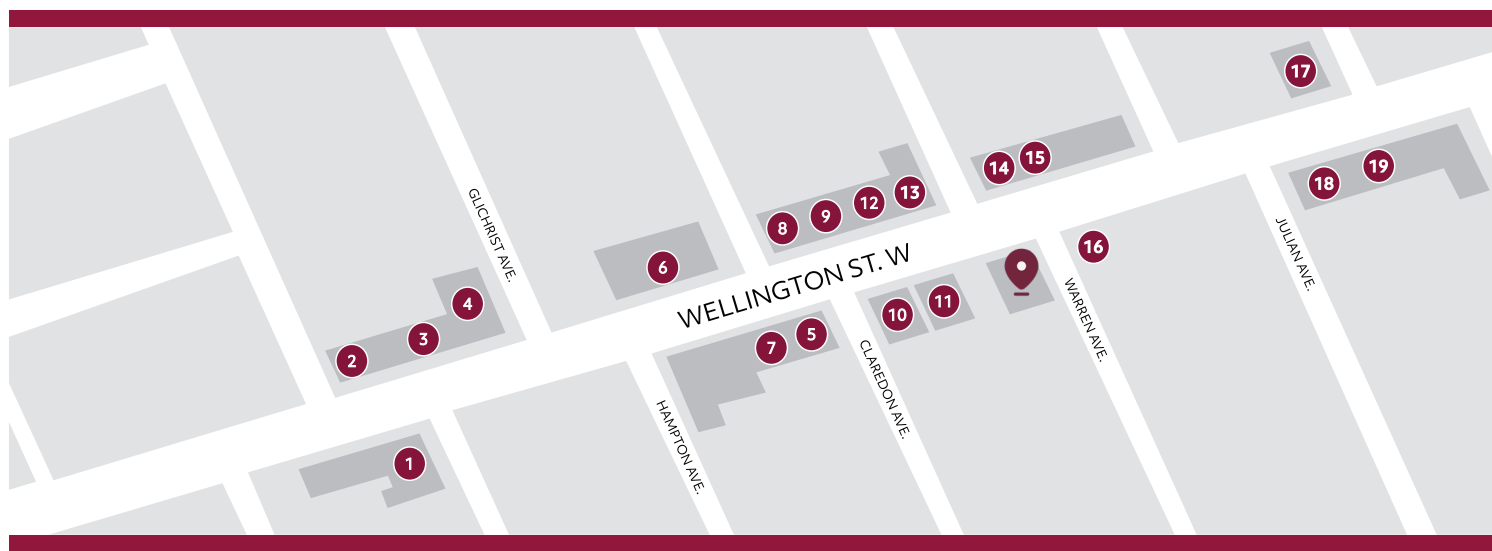
1306

2,806
SQ FT AVAILABLE

Wellington St. West

- **Bright and open floor plan** with three enclosed offices and spacious boardroom overlooking urban streetscape
- **Large, enclosed kitchenette** ideal for team lunches, meetings, and staff gatherings
- Surrounded by **ample neighbourhood amenities** including restaurants, retailers, coffee shops, local service providers, and fitness studios – offering great convenience for employees and clients
- Situations close to Tunney's Pasture LRT station and multiple bus routes, NCC pathways, and easy access to Queensway for **multiple transit options**
- **Parking available**

MAP OF PROPERTY AREA

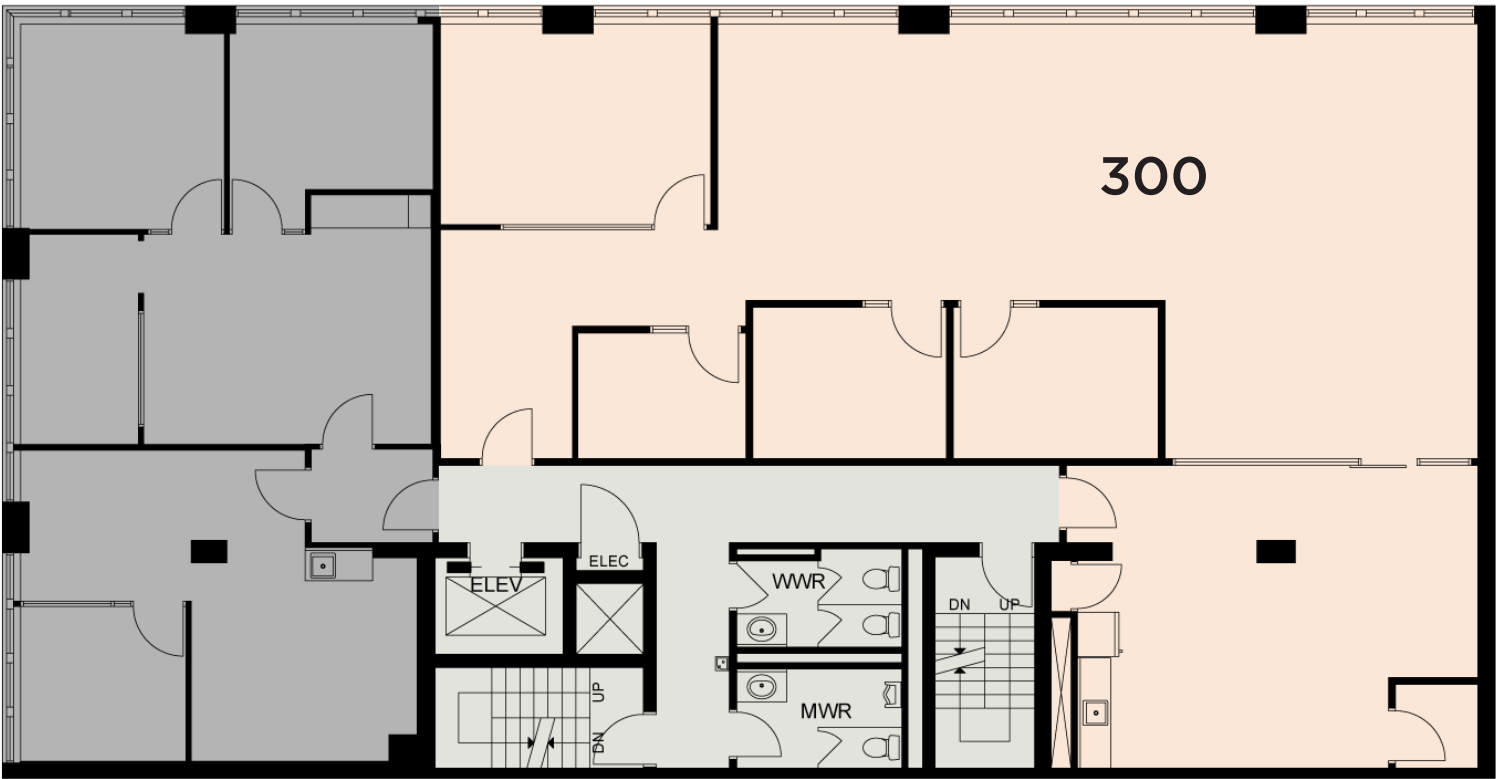


OFFICE

- | | | | | |
|------------------------------------------------------------------------------------------------|----------------------------------------------------------------------------------------------------------------|------------------------------------------------------------------------------------------------------------|----------------------------------------------------------------------------------------------------------------------|-----------------------------------------------------------------------------------------------------|
|  1 STOFA |  5 ARC OF LIFE HEALTH GROUP |  9 WELLINGTON GASTROPUB |  13 PARLOUR |  17 BRIDGEHEAD |
|  2 CAFFE MIO |  6 ANYTIME FITNESS |  10 PARMA RAVIOLI |  14 HILARY'S DRY CLEANERS |  18 JV STUDIOS |
|  3 RED SALON |  7 WELLINGTON DENTAL CARE |  11 WATSONS PHARMACY |  15 SUSHI UMI |  19 VICTOIRE |
|  4 NICASTROS |  8 SUPPLY & DEMAND |  12 OTTAWA BAGEL SHOP |  16 CHESTERFIELD'S GASTRO DINER | |

Layout & Floorplan

SUITE 300 | 2,806 SQ FT AVAILABLE



FOR LEASE COMMON AREA LEASED

Photos

ALL PHOTOS DEPICT SUITE 300 | 2,806 SQ FT



FOR MORE INFORMATION, PLEASE CONTACT
info@huntingtonproperties.ca
—— 613.592.1818 ——

