

FOR LEASE

1550 Laperriere Ave.

SUITE 201 | 3,730 SQ FT



 **Huntington**
PROPERTIES

Key Facts

1550

3,730
SQ FT AVAILABLE

Laperriere Ave.

Discover an **exceptional office space conveniently located in West Ottawa**, perfectly positioned to provide unparalleled access and convenience for your business.

Prime Location

- Situated **between the Carling/Kirkwood and Maitland exits off Highway 417**, offering seamless connectivity to key areas of the city.
- **Easy access** to Carling Avenue, Kichi Zibi Parkway, and major transit routes.
- **Ample on-site parking** for both staff and visitors.
- Just 750 meters from **the Altea Recreation Facility**, a state-of-the-art center perfect for promoting employee wellness and work-life balance.

Functional and Adaptable Suite

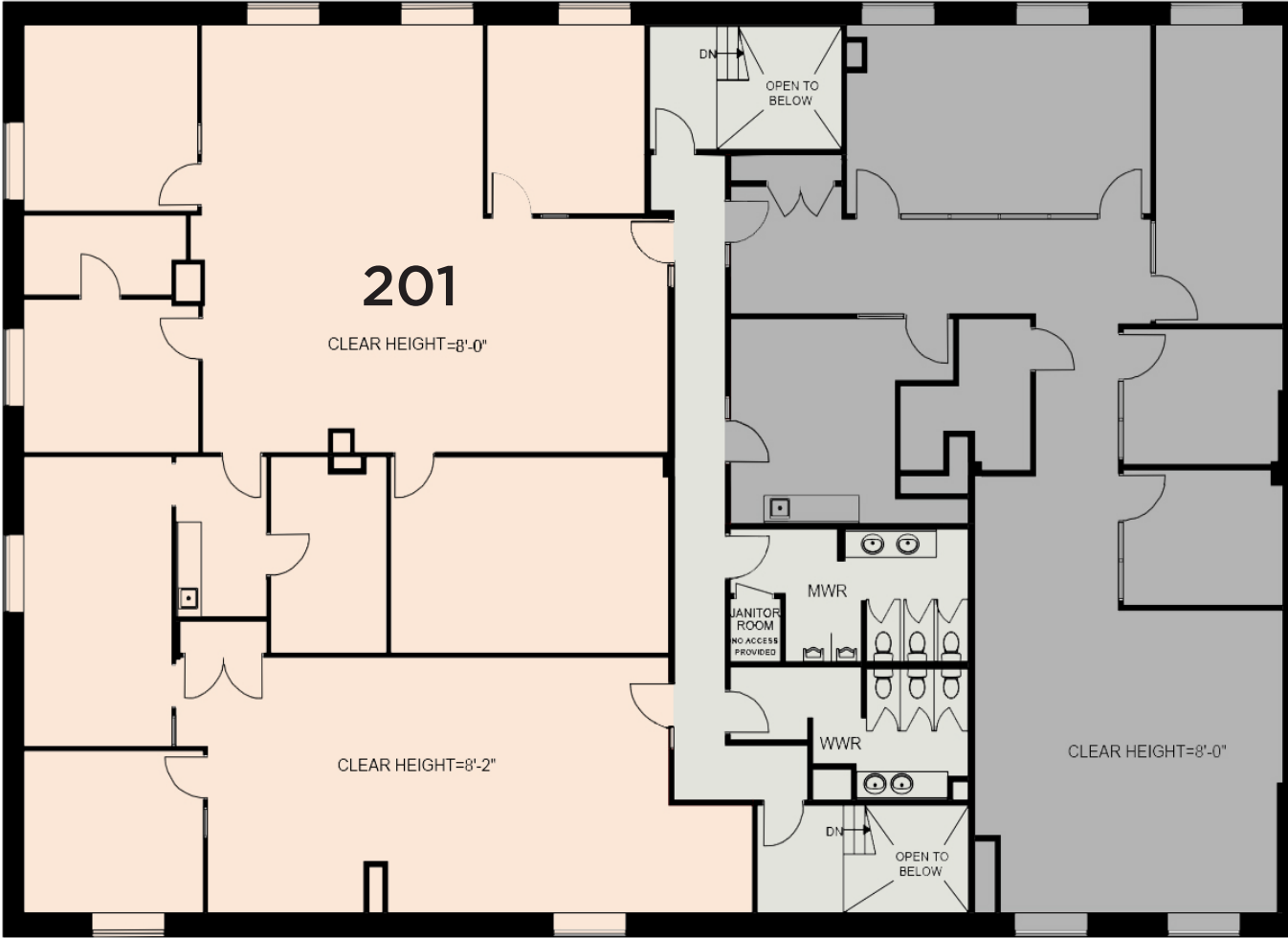
- Large windows throughout, providing **abundant natural light** and creating a bright, inviting workspace.
- Existing features include a **fully equipped kitchenette**, boardroom, and enclosed office layout.
- Collaborate with our team to create a **customized workspace** tailored to your business needs. Enjoy a turnkey delivery, allowing you to move in and start operating without delay.

MAP OF PROPERTY AREA



Layout & Floorplan

SUITE 201 | 3,730 SQ FT AVAILABLE



FOR LEASE COMMON AREA LEASED

Photos

ALL PHOTOS DEPICT SUITE 201 | 3,730 SQ FT



FOR MORE INFORMATION, PLEASE CONTACT
info@huntingtonproperties.ca
—— 613.592.1818 ——

