

FOR LEASE

1306

Wellington St. West

---

SUITE 501 | 1,759 SQ FT



**Huntington**  
PROPERTIES

# Key Facts

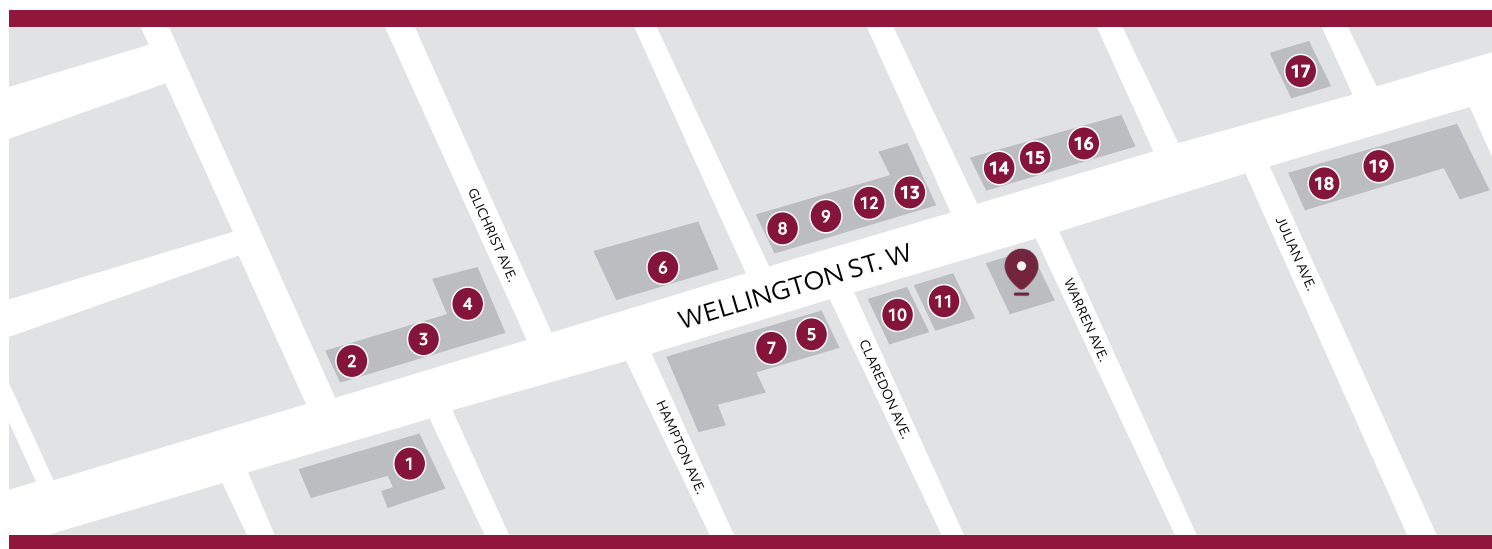
## 1306

1,759  
SQ FT AVAILABLE

### Wellington St. West

- Turnkey office space in the **heart of Wellington Village**, a vibrant and walkable neighbourhood
- **Contemporary finishes** with functional open layout, including two enclosed office or meeting spaces, a server/IT room, and kitchenette.
- Surrounded by ample **neighbourhood amenities** including restaurants, retailers, coffee shops, local service providers, and fitness studios – offering great convenience for employees and clients
- Situated close to Tunney's Pasture LRT station and multiple bus routes, NCC pathways, and easy access to Queensway for **multiple transit options**
- **Parking available**

### MAP OF PROPERTY AREA



#### OFFICE

1 STOFA

5 WINE RACK

9 WELLINGTON GASTROPUB

13 PARLOUR

17 BRIDGEHEAD

2 CAFFE MIO

6 ANYTIME FITNESS

10 PARMA RAVIOLI

14 HILARY'S DRY CLEANERS

18 JV STUDIOS

3 RED SALON

7 WELLINGTON DENTAL CARE

11 WATSONS PHARMACY

15 SUSHI UMI

19 VICTOIRE

4 NICASTROS

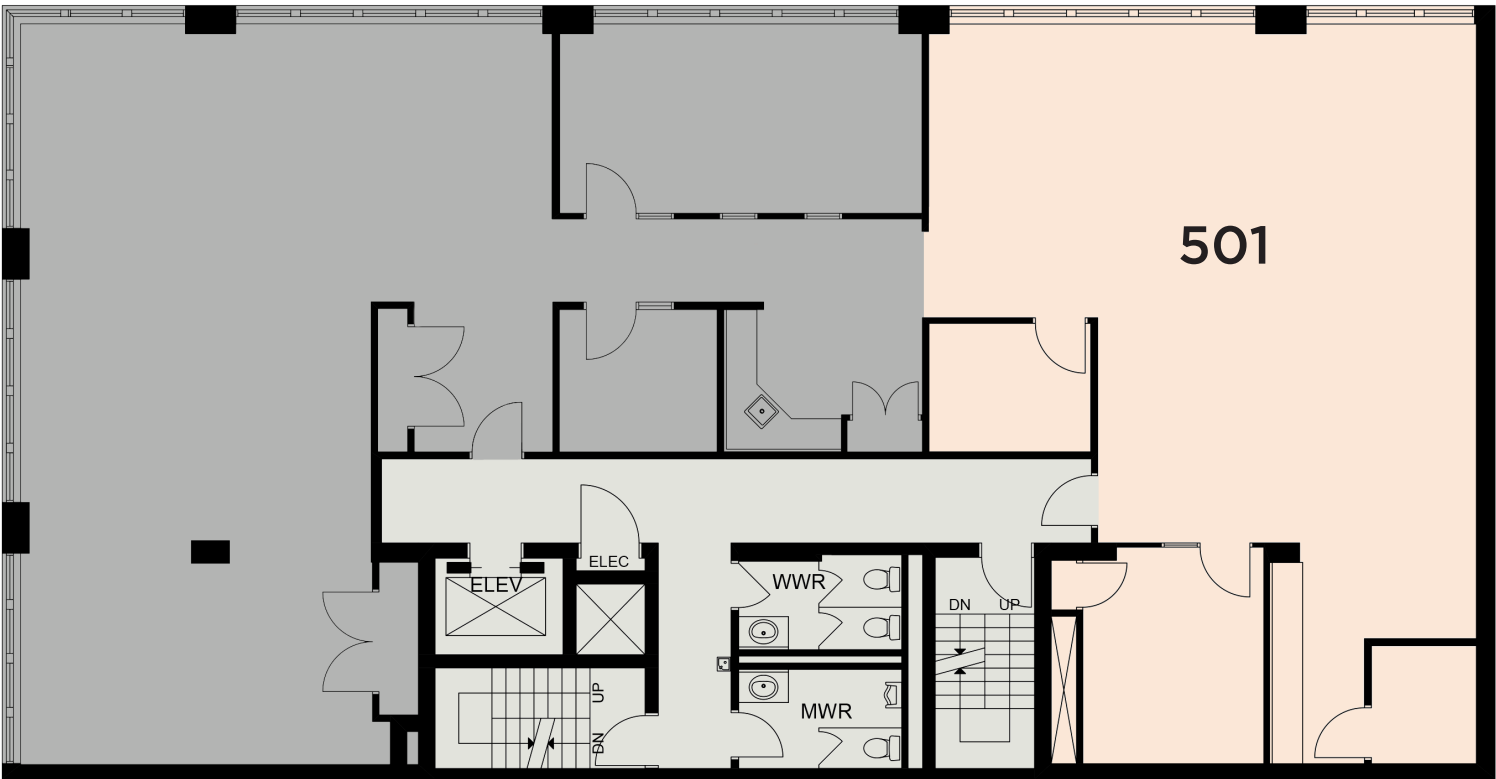
8 SUPPLY & DEMAND

12 OTTAWA BAGEL SHOP

16 LITTLE JO BERRY'S

# Layout & Floorplan

SUITE 501 | 1,759 SQ FT AVAILABLE



FOR LEASE COMMON AREA LEASED



# Photos

ALL PHOTOS DEPICT SUITE 501 | 1,759 SQ FT



FOR MORE INFORMATION, PLEASE CONTACT  
[info@huntingtonproperties.ca](mailto:info@huntingtonproperties.ca)  
—— 613.592.1818 ——

