

FOR LEASE

1306

Wellington St. West

SUITE 500 | 4,228 SQ FT



Huntington
PROPERTIES

Key Facts

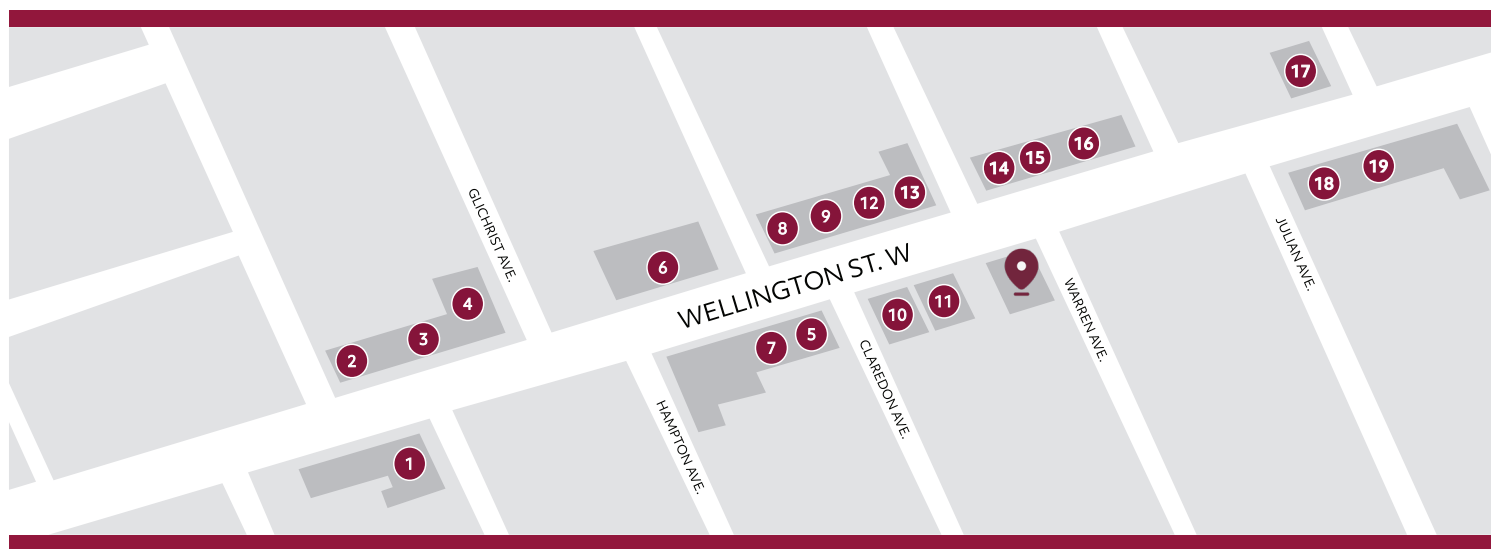
1306

4,228
SQ FT AVAILABLE

Wellington St. West

- Full floor of office space in the **heart of Wellington Village**, a vibrant and walkable neighbourhood
- **Contemporary finishes** with functional layout, including a mix of open space, enclosed offices and large boardroom
- Surrounded by ample **neighbourhood amenities** including restaurants, retailers, coffee shops, local service providers, and fitness studios – offering great convenience for employees and client
- Situated close to Tunney's Pasture LRT station and multiple bus routes, NCC pathways, and easy access to Queensway for **multiple transit options**
- **Parking available**

MAP OF PROPERTY AREA



OFFICE

1 STOFA

5 WINE RACK

9 WELLINGTON GASTROPUB

13 PARLOUR

17 BRIDGEHEAD

2 CAFFE MIO

6 ANYTIME FITNESS

10 PARMA RAVIOLI

14 HILARY'S DRY CLEANERS

18 JV STUDIOS

3 RED SALON

7 WELLINGTON DENTAL CARE

11 WATSONS PHARMACY

15 SUSHI UMI

19 VICTOIRE

4 NICASTROS

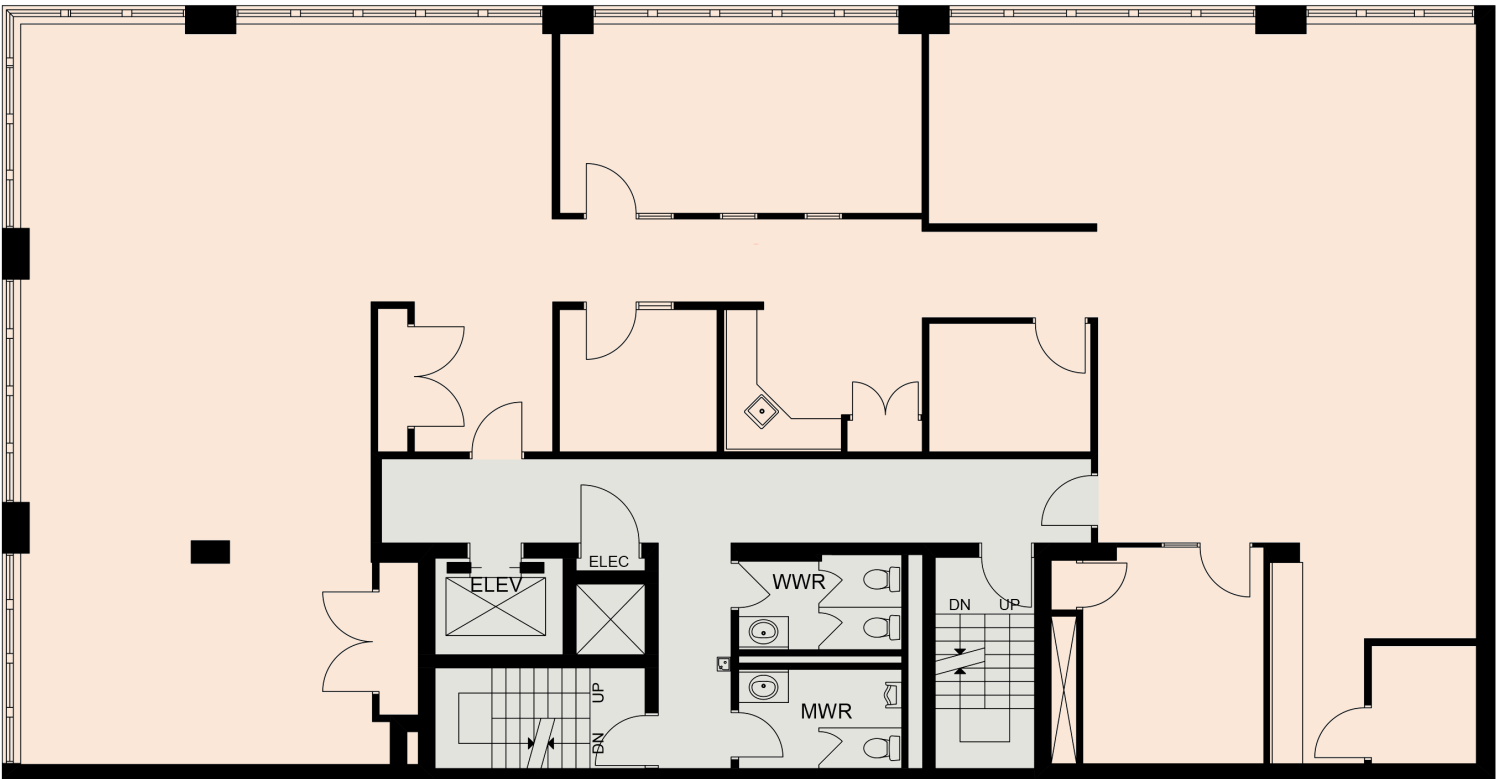
8 SUPPLY & DEMAND

12 OTTAWA BAGEL SHOP

16 LITTLE JO BERRY'S

Layout & Floorplan

SUITE 500 | 4,228 SQ FT AVAILABLE



Photos

ALL PHOTOS DEPICT SUITE 500 | 4,228 SQ FT



FOR MORE INFORMATION, PLEASE CONTACT
info@huntingtonproperties.ca
—— 613.592.1818 ——

