

FOR LEASE

1292

Wellington St. West

SUITE 100 (LOWER LEVEL) | 646 SQ FT



Huntington
PROPERTIES

Key Facts

1292

646
SQ FT AVAILABLE

Wellington St. West

- Located in the **heart of Wellington Village**, Ottawa's most eclectic neighbourhood
- Surrounded by **ample neighbourhood amenities** including restaurants, retailers, coffee shops, local service providers, and fitness studios – offering great convenience for employees
- Situated close to **Tunney's Pasture LRT station and multiple bus routes**, NCC pathways, and easy access to Queensway for multiple transit options
- On-site **parking available**
- **Basement level suite** with easy access to main entrance with open floor plan providing flexibility for configuration and layout
- Contains **ensuite bathroom, shower, and kitchenette**

MAP OF PROPERTY AREA

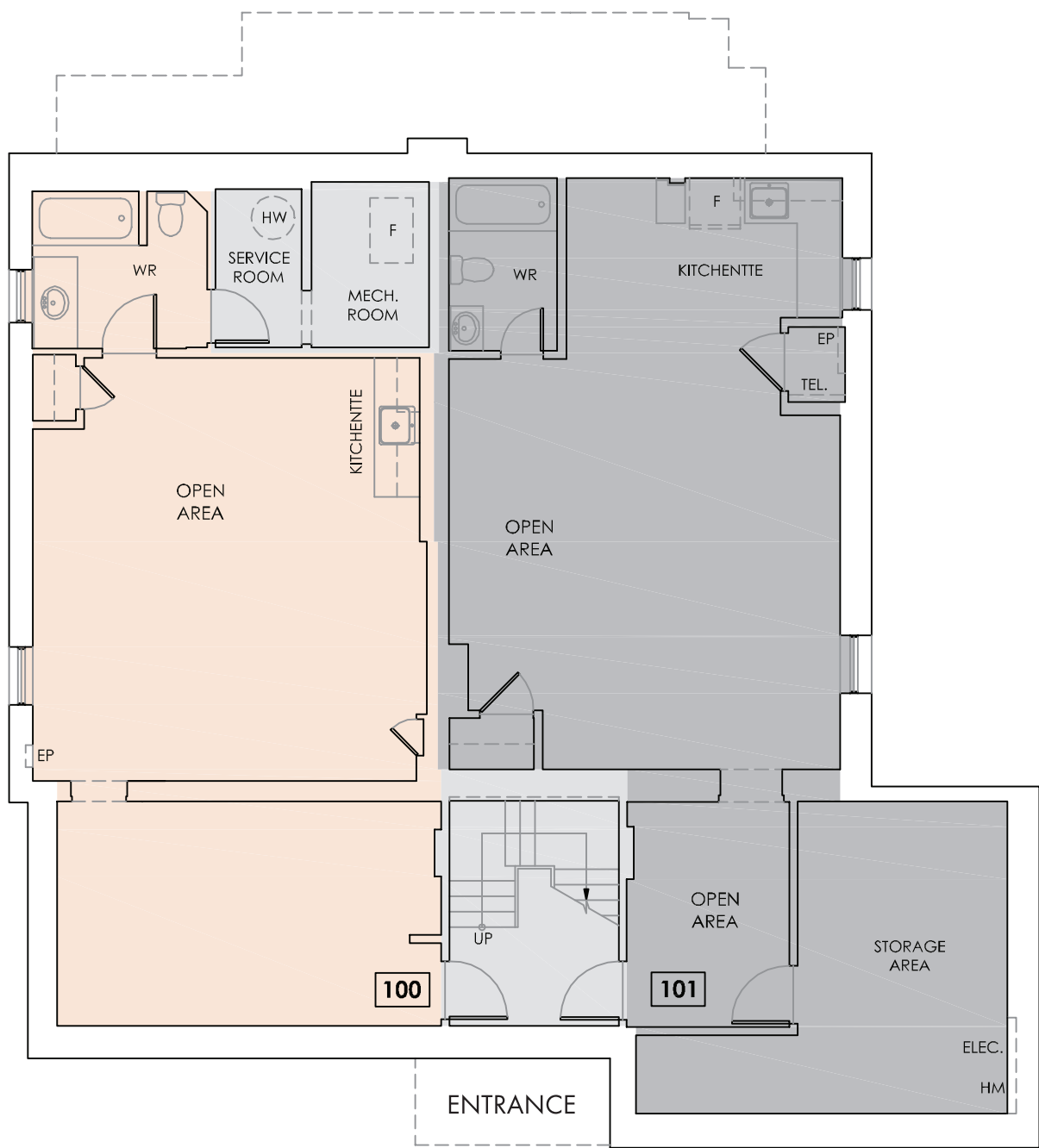


OFFICE

- | | | | | |
|-------------|--------------------------|------------------------|--------------------------|---------------|
| 1 STOFA | 5 WINE RACK | 9 WELLINGTON GASTROPUB | 13 PARLOUR | 17 BRIDGEHEAD |
| 2 CAFFE MIO | 6 ANYTIME FITNESS | 10 PARMA RAVIOLI | 14 HILARY'S DRY CLEANERS | 18 JV STUDIOS |
| 3 RED SALON | 7 WELLINGTON DENTAL CARE | 11 HERB & SPICE GROCER | 15 SUSHI UMI | 19 VICTOIRE |
| 4 NICASTROS | 8 SUPPLY & DEMAND | 12 OTTAWA BAGEL SHOP | 16 LITTLE JO BERRY'S | |

Layout & Floorplan

SUITE 100 | 646 SQ FT



FOR LEASE COMMON AREA LEASED

Photos

ALL PHOTOS DEPICT EXTERIOR OR SUITE 100 | 646 SQ FT



FOR MORE INFORMATION, PLEASE CONTACT
info@huntingtonproperties.ca
—— 613.592.1818 ——

