

FOR LEASE

421 Richmond Road

SUITE 200 | 898 SQ FT



Huntington
PROPERTIES

Key Facts

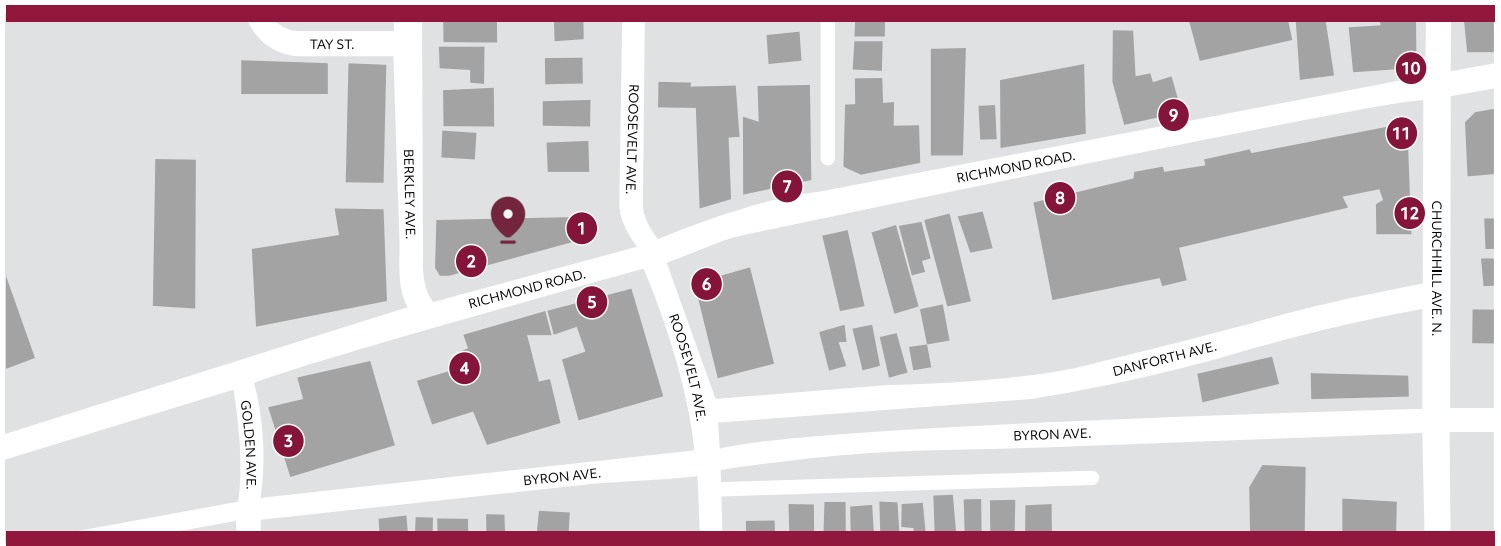
421

Richmond Road

898
SQ FT AVAILABLE

- Located in the **heart of Westboro Village**, Ottawa's fastest growing commercial and residential node
- Surrounded by **ample neighbourhood amenities** including coffee shops, restaurants, retailers, fitness studios and activities, offering great convenience for employees
- Open floor plans with **lots of natural light** at all times of the day
- Convenient **elevator access** to suites
- On-site **parking available**
- Located **extremely close to Phase 2 LRT station**, within walking distance of current Westboro bus station, close to NCC pathways, and easy access to Queensway for multiple transit options
- Walking distance to **Westboro Beach**

MAP OF PROPERTY AREA



OFFICE

1 STARBUCKS

3 BRIDGEHEAD

5 SHOPPERS
DRUG MART

7 BARLEY MOW

9 PURE
KITCHEN

11 LULULEMON

2 PHARMASAVE

4 CLOCKTOWER

6 MAMIE
CLAFOUTIS

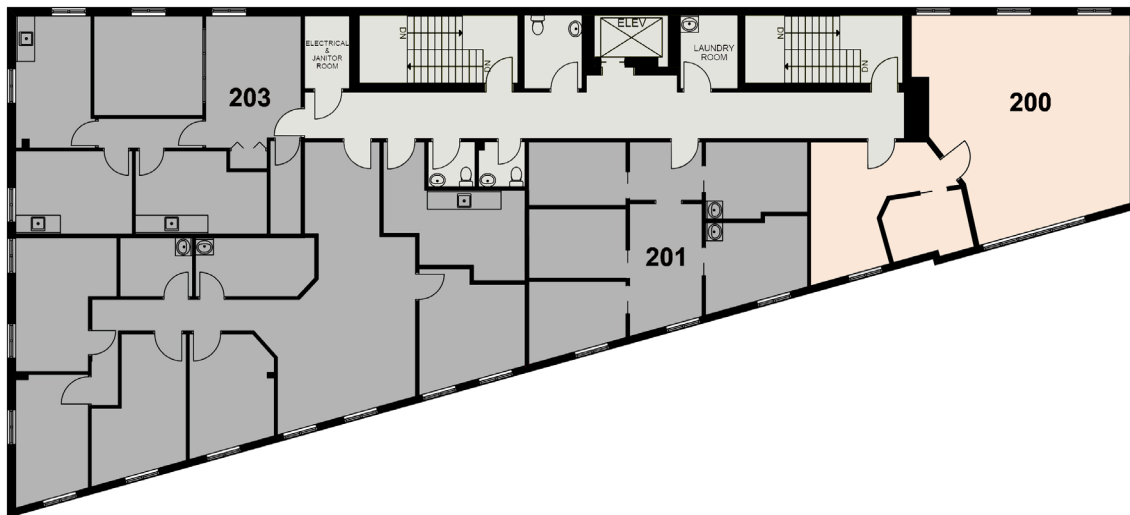
8 MEC

10 GEZELLIG

12 EQUATOR
COFFEE

Layout & Floorplan

SUITE 200 | 898 SQ FT



■ FOR LEASE ■ COMMON AREA ■ LEASED



EXTERIOR VIEW OF SUITE 200

Photos

ALL PHOTOS DEPICT SUITE 200 | 898 SQ FT



FOR MORE INFORMATION, PLEASE CONTACT
info@huntingtonproperties.ca
—— 613.592.1818 ——

