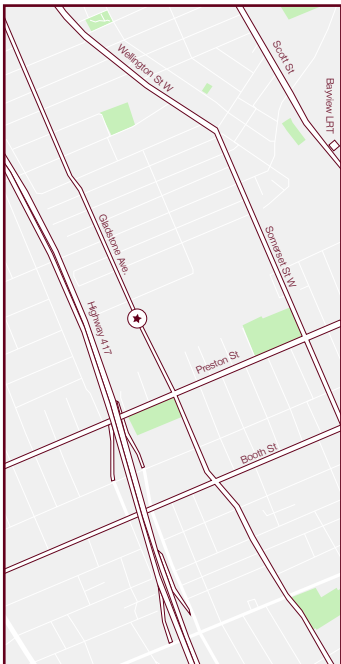


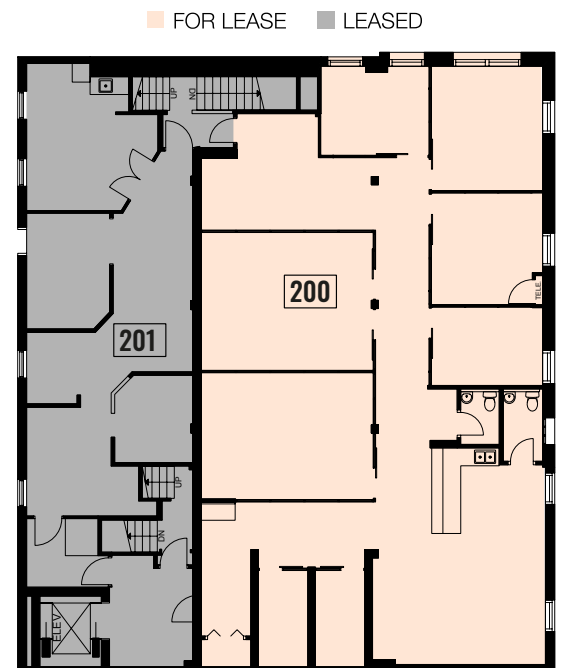
OFFICE SPACE FOR LEASE

950 GLADSTONE AVENUE

2,957 SQUARE FEET



- ▶ Nestled between Little Italy and Hintonburg, this neighbourhood has no shortage of amenities nearby. Ottawa's most notable restaurants, cafes, breweries and boutique retail stores are within steps of this ideally situated property
- ▶ On-site parking available
- ▶ Located 1 KM from **Bayview LRT** station, with Phase 2 **Gladstone LRT** station coming soon
- ▶ Existing leasehold improvements include spacious offices and boardroom with glass partitions, kitchenette and original wood beams – move in ready!



950 GLADSTONE AVENUE

2,957 SQUARE FEET

