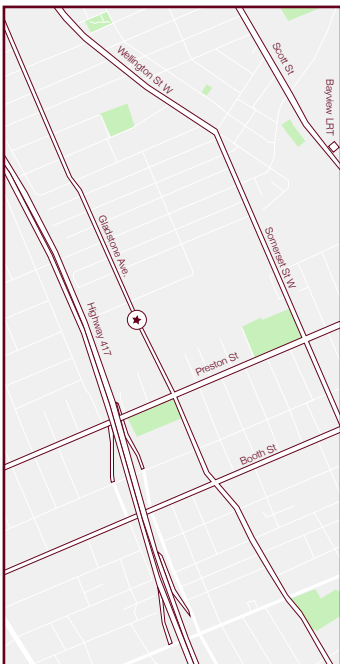
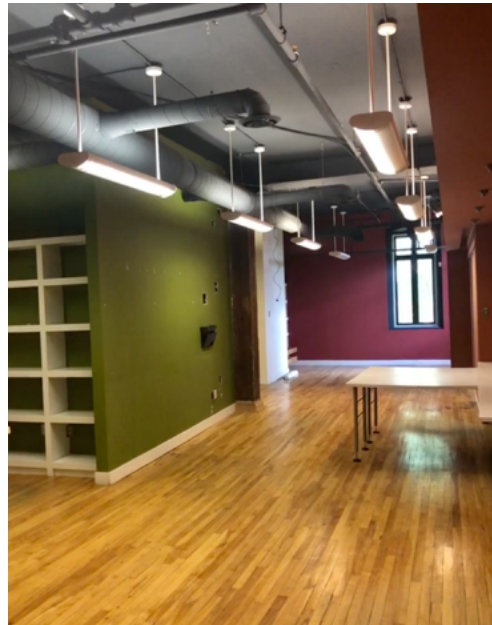


OFFICE/SHOWROOM SPACE FOR LEASE

950 GLADSTONE AVENUE

4,300 SQUARE FEET



- ▶ Nestled between Little Italy and Hintonburg, this neighbourhood has no shortage of amenities nearby. Ottawa's most notable restaurants, cafes, breweries and boutique retail stores are within steps of this ideally situated property
- ▶ On-site parking available
- ▶ Located 1 KM from **Bayview LRT** station, with Phase 2 **Gladstone LRT** station coming soon
- ▶ Bright, open concept space with unique character including industrial style open ceiling, original wood beams and hardwood flooring

