

OFFICE/RETAIL SPACE FOR LEASE

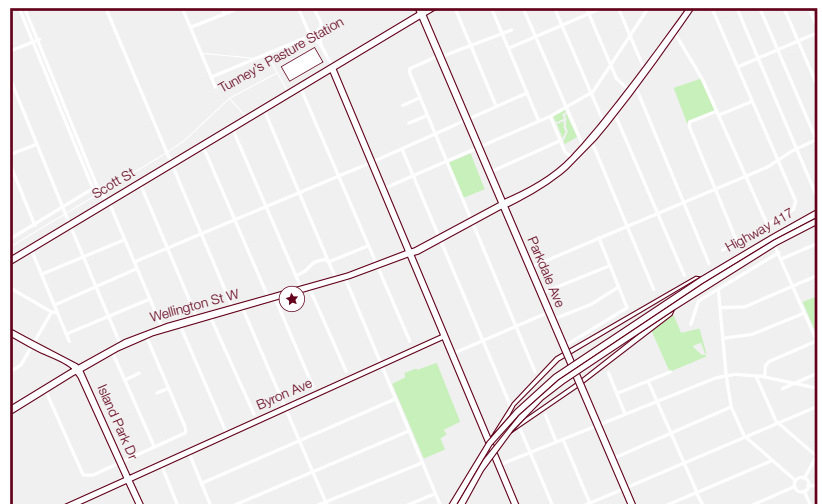
1292 WELLINGTON STREET WEST

1,609 SQUARE FEET



1292 WELLINGTON STREET WEST

- ▶ Located in the heart of Wellington Village, this space offers great visibility from the main street and high foot traffic
- ▶ Steps away from local retailers, cafes and many of Ottawa's top rated restaurants and bars
- ▶ Less than 1 KM from the new Tunneys Pasture LRT station
- ▶ On-site parking available

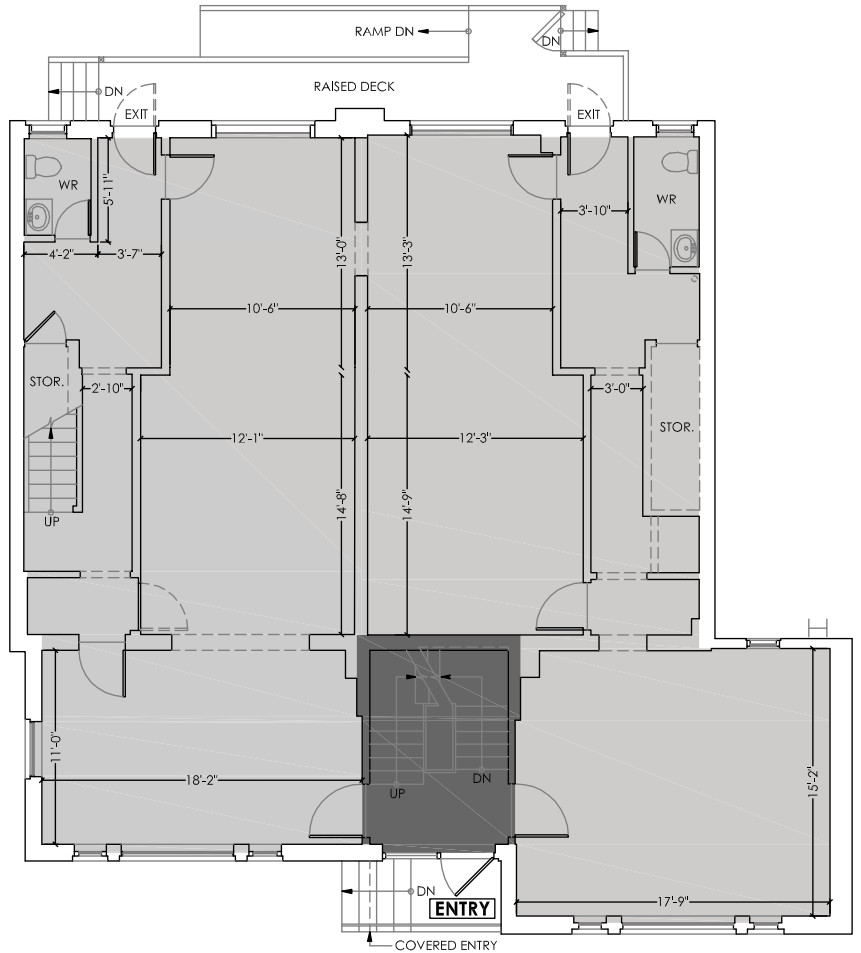


Huntington
PROPERTIES

info@huntingtonproperties.ca | 613.592.1818

www.huntingtonproperties.ca

1292 WELLINGTON STREET WEST



WELLINGTON STREET WEST