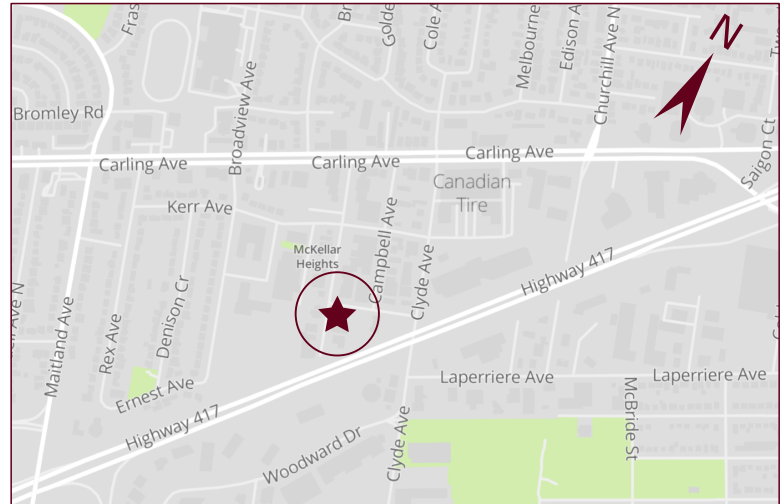
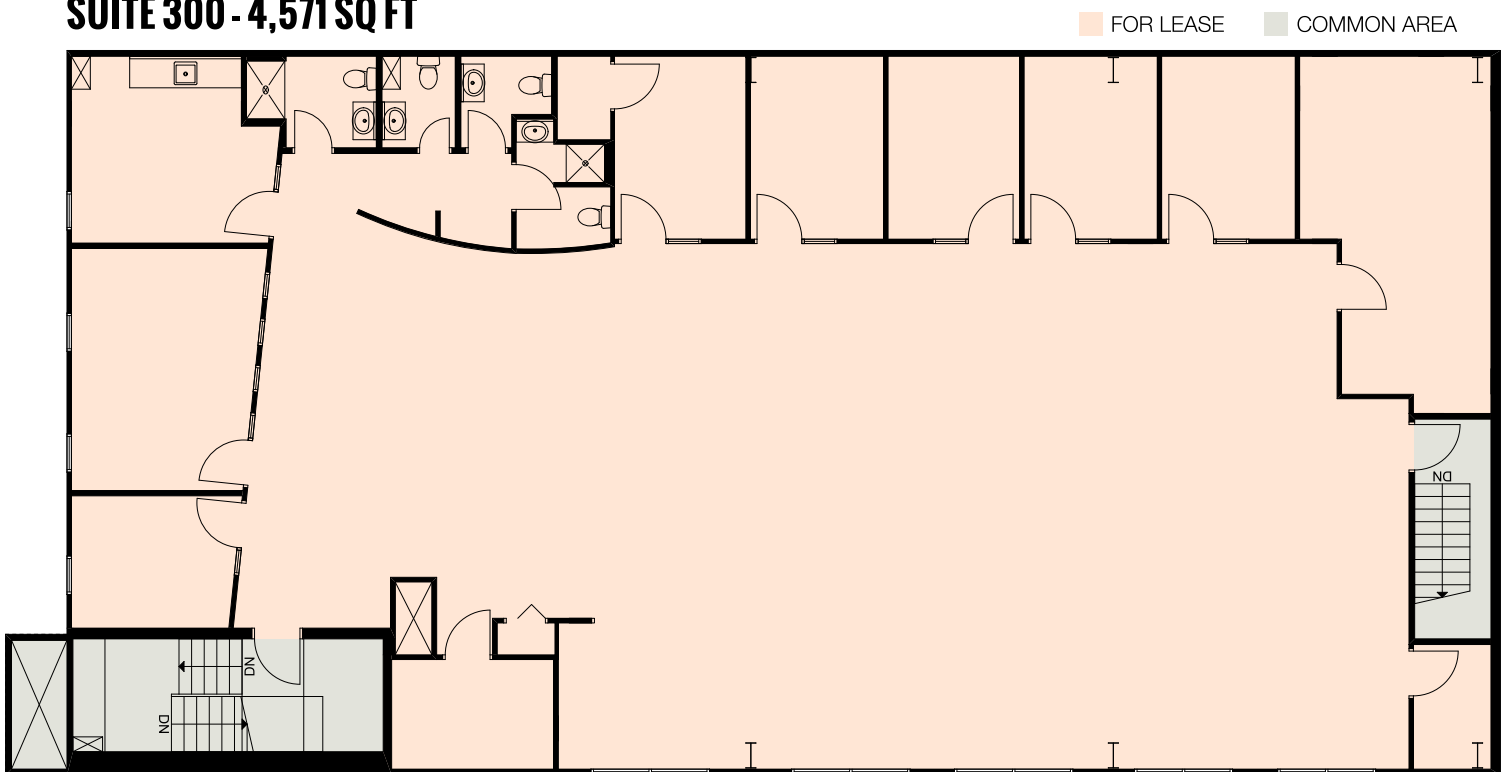


OFFICE SPACE FOR LEASE

883 BOYD AVENUE
4,571 SQ FT



SUITE 300 - 4,571 SQ FT



OFFICE SPACE FOR LEASE

883 BOYD AVENUE
4,571 SQ FT



883 BOYD AVENUE

- ▶ Central location with convenient access to the Carling and Maitland ramps of Highway 417
- ▶ Updated office interior with a mix of closed offices, meeting rooms and open workspace
- ▶ Private washrooms and kitchenette
- ▶ Excellent signage opportunities seen from Highway 417
- ▶ Opportunity for 350 sq ft of ground floor warehouse space with dock loading